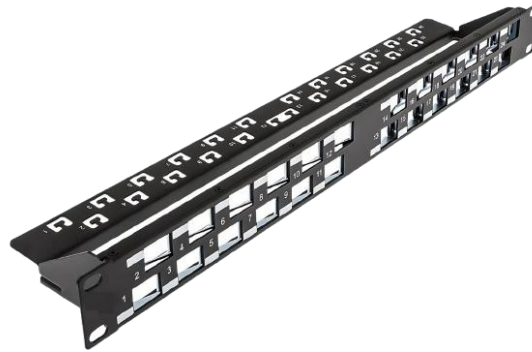


Unshielded Angled Staggered Patch Panel, Unloaded, 1U



The rack mountable Angled Staggered Patch Panel offers fast and reliable installation of Unshielded cables. A rear cable management bar is supplied which acts as stress reliever for terminated cables. Angled position provided to Keystone outlets to reduce strain relief on connected patch cords. Patch panel is provided with mini cable ties, cage nuts & rare cable management. The Jack to be ordered separately.

Features

- 19" RJ-45 Patch Panel with 24 ports on 1U
- Strain relief and cable management with inbuilt wire manager
- Universal wiring - T568 A or B wiring pattern
- Accommodates Cat5e, Cat6 & Cat6A Unshielded Jacks
- Straight Patch Panel with Angled IO slots
- Snap in type
- UL Listed
- Covered under 3C3® Performance Warranty

Mechanical Specifications

Panel	:	Metal SPCC
Panel Thickness	:	1.5mm
Port Count	:	24Nos
Panel Color	:	Black
Each port Numbering	:	Yes
Compatible Outlet Type	:	Unshielded

Unshielded Angled Staggered Patch Panel, Unloaded, 1U

Environmental Specifications

Operating Temperature	:	-10°C to +60°C
Storage Temperature	:	-40°C to +70°C
Humidity	:	10% - 90% RH

Standard Compliance/Certifications

- RoHS Certified
- ASTM B 117 Certified
- UL Listed

Ordering Information

Product Code

11840

Description

Copper Panel Angled, Staggered, 24Port Unloaded 1U wire manager included