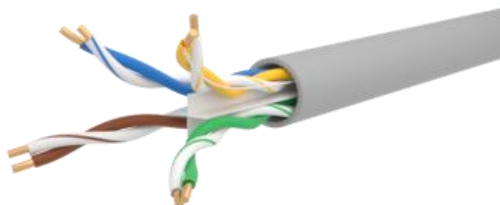


# Category 6A U - UTP CABLE - LSZH



High Speed 10Gigabit Ethernet U-UTP 500 MHz Class EA / Category 6A LSZH Cable is produced using HDPE Insulated 8 x 23 AWG Solid Bare Copper Conductors. The twisted pairs are covered with LSZH Outer Sheath. It supports 10/100/1000Base-T, 155Mbps ATM, IEEE 802.3an (10GBase-T) Standard.

## Features

- ANSI/TIA-568.2-D Category 6A
- ISO/IEC 11801 Class EA
- Fire Rating as per IEC 60332-1
- Supports 10Gigabit Ethernet to a full 100m up to 500 MHz
- Unique Insulation design to prevent Alien Crosstalk
- RoHS Compliant
- Covered under 3C3® Performance Warranty

## Mechanical Specifications

Conductor AWG	: 23
Conductor Material	: Solid bare Copper
Conductor Count	: 8
Insulation Material	: High Density Polyethylene
No. of pair	: 4
Color Code	
Pair #1	: Blue, White and Blue
Pair #2	: Orange, White and Orange
Pair #3	: Green, White and Green
Pair #4	: Brown, White and Brown
Drain Wire	: No
Outer Sheath	: LSZH
Outer Sheath Color	: Grey
Overall cable diameter	: 7.20±0.30mm
Sequential Marking	: At every meter
RIP Cord	: Yes
Cross filler	: HDPE
Nominal Weight	: 18.0Kg

# Category 6A U - UTP CABLE - LSZH

## Electrical Specifications

Characteristic Impedance	: 100Ω±15%
Conductor Resistance (DC)	: ≤9.38Ω/100m
Resistance Unbalance	: 5% max
Mutual Capacitance	: ≤ 5.6nF/100m
Capacitance Unbalance	: 330pF/100m
NVP	: 69±%
Minimum Bending radius	: 8X cable diameter
Pulling force	: 100N
Maximum propagation delay @500MHz	: 536ns

Frequency	Max. IL (dB)	Min. NEXT (dB)	Min PSNEXT (dB)	Min ACRF (dB)	Min PSACRF (dB)	Min PSANEXT (dB)	Min PSAACRF (dB)	Min RL (dB)
500MHz	≤49.3	≥ 33.8	≥31.8	≥13.8	≥10.8	≥52	≥24.2	≥ 15.2

## Environmental Specifications

Installation Temperature	: 0°C to 50°C
Storage Temperature	: -20°C to +75°C
Operating Temperature	: -20°C to +70°C

## Flame Properties

Flammability Test	: IEC 60332-1
Acid Gas Emission Test	: IEC 60754
Smoke Density Test	: IEC 61034

## Standard Compliances/Certifications

- RoHS Certified

## Ordering Information

**Product Code**  
10304

**Description**  
High Speed 10G Ethernet U-UTP 500 MHz Class EA LSZH Cable, C6A