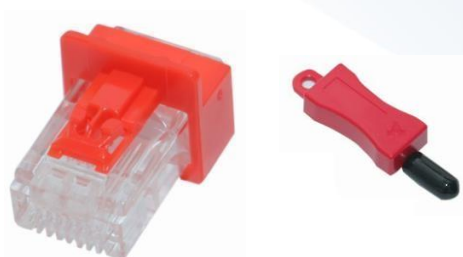


RJ 45 Port Blocker



The RJ45 Port Blocker/Plug is designed to enable port protection in standard RJ45 copper ports. It is highly recommended for Data Centre, Work area applications and where the physical security is a prime Importance. Auto lock the Jack by inserting the RJ45 port blocker and to unlock the jack you should use the key.

Features

- Complies to TIA-568.2-D Standards.
- Compatible with industry standard RJ-45 ports in electronic equipment, patch panels, and Outlets
- Compatible with high-density network equipment and 1U 48-port patch panels
- Covered under 3C3® Performance Warranty

Mechanical Specifications

Lock Material	: Fireproof Nylon - 66
Plug Material	: PC, UL 94V-2
Port Blocker Dimension (D x W x H)	: 22.42 x13.9 x14.2 mm
Plug Color	: Red
Key Color	: Red
Key Dimension (D x W x H)	: 50 x 15 x 8 mm
Operating Temperature	: -20°C to +70°C

Ordering Information

Product Code	Description
15020	Port Block, RJ45 Plug
15290	Key for Lockable Patch Cord/Port Blocker